



### IMPACT OF HEART DISEASE<sup>1</sup>



Cardiovascular, or heart, disease is a broad term for a range of diseases affecting the heart and blood vessels. Every three minutes, a person in the U.K. suffers a heart attack. Of the 175,000 heart attacks that are currently diagnosed each year in the UK, approximately 110,000 are among men and 65,000 are among women.



### GOOD NEWS<sup>6</sup>

A *British Medical Journal* study suggests that Abbott's high sensitive troponin test\* may help pick up twice as many women's heart attacks as standard blood tests.

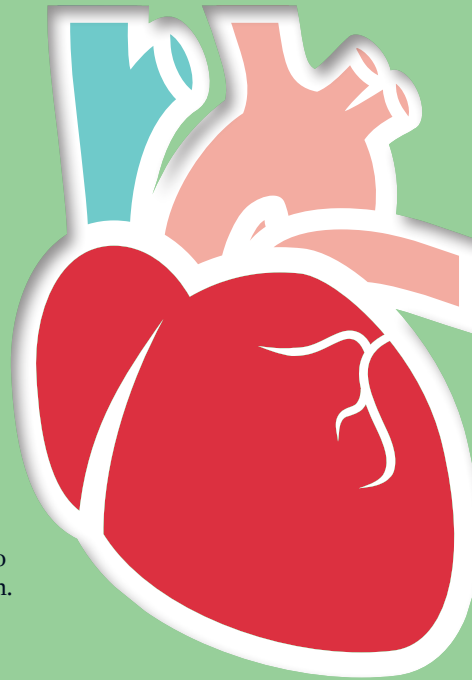
**Note:** This test is not available in the U.S.



### IMPORTANCE to WOMEN<sup>5</sup>

Abbott's high sensitive troponin test\* can measure very low levels of cardiac troponin. This is especially important for women, who often have lower levels of troponin than men.

**Note:** This test is not available in the U.S.



### HEART ATTACK SYMPTOMS<sup>2</sup>

Chest pain is the most common symptom. Some symptoms are more likely to be experienced by women than men, including:

- Shortness of breath.
- Nausea/vomiting.
- Back or jaw pain.



### WOMEN and HEART ATTACKS<sup>3,4</sup>

Globally, twice as many women die from heart attacks and strokes than from all cancers combined. Women under 55 are at the highest risk of misdiagnosis of heart attacks.



### WHAT IS TROPONIN?

Cardiac troponin is a protein that can indicate injury to the heart muscle. Troponin levels rise when heart cells are damaged. Doctors use blood tests to detect changes in these levels to help diagnose heart attacks.

KNOW THE SYMPTOMS, AND ACT FAST

# Heart Attacks: How Women Can Beat the Odds

If you experience any symptoms of a heart attack, call emergency services immediately or seek medical attention. For more information about heart health, please visit [www.abbott.com](http://www.abbott.com) and [www.worldheart.org](http://www.worldheart.org).

\*Abbott's ARCHITECT STAT High Sensitive Troponin-I (hsTnI) test is commercially available outside of the United States. The test is in development and not commercially available in the United States.

#### REFERENCES

1. Cardiovascular disease statistics: Headline statistics. British Heart Foundation. January 19, 2015. Website: <https://www.bhf.org.uk/-/media/files/research/heart-statistics/cardiovascular-disease-statistics---headline-statistics.pdf>. Accessed January 19, 2015.
2. Heart attack symptoms in women. American Heart Association. October 10, 2012. Website: [www.heart.org/HEARTORG/Conditions/HeartAttack/WarningSignsofHeartAttack/Heart-Attack-Symptoms-in-Women\\_UCM\\_436448\\_Article.jsp](http://www.heart.org/HEARTORG/Conditions/HeartAttack/WarningSignsofHeartAttack/Heart-Attack-Symptoms-in-Women_UCM_436448_Article.jsp). Accessed October 8, 2014.
3. WHO publishes results of largest-ever global collaboration on heart disease. World Health Organization press release. September 2003. Website: [www.who.int/mediacentre/news/releases/2003/pr72/en/](http://www.who.int/mediacentre/news/releases/2003/pr72/en/). Accessed October 8, 2014.
4. Pope JH, Aufderheide TP, Ruthazer R, et al. Missed diagnoses of acute cardiac ischemia in the emergency department. *New England Journal of Medicine*. 2000;342:1163-1170.
5. Abbott ARCHITECT STAT High Sensitive Troponin-I Package Insert. G4-5779/R04.
6. Anoop S, Mills N, Griffiths M, et al. High-sensitivity cardiac troponin and the underdiagnosis of myocardial infarction in women: A prospective cohort study. *British Medical Journal*. Website: <http://www.bmj.com/content/350/bmj.g7873>.